

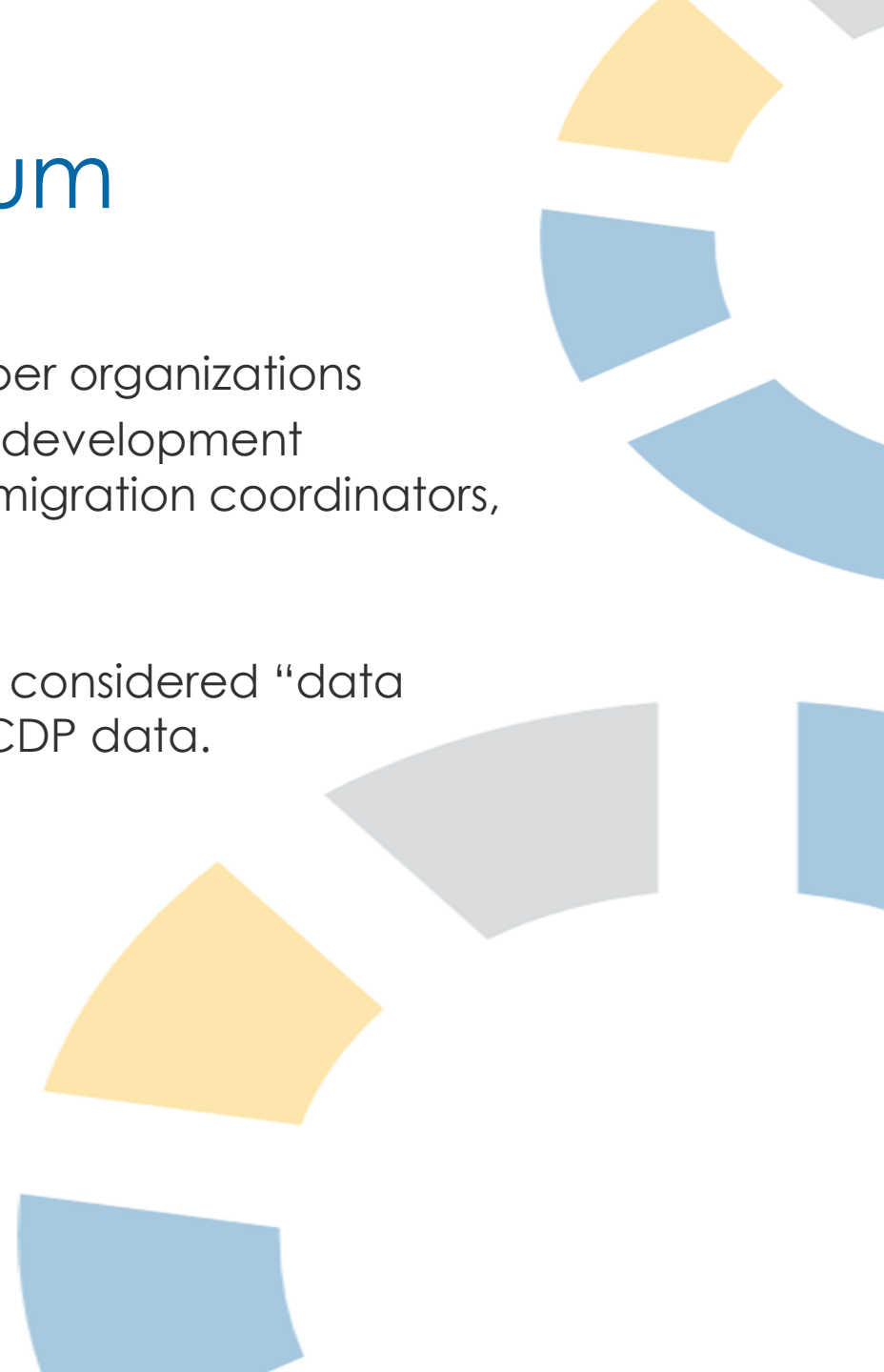
HOW CDP MEMBERS IN NORTHERN ONTARIO USE CDP DATA

WILLIAM DUNSTAN, NORTHERN POLICY INSTITUTE



Northern Ontario Data Consortium

- The Northern Ontario Data Consortium (NODC) has 18 member organizations
 - Members include workforce planning boards, economic development organizations, public health units, small municipalities, immigration coordinators, community non-profits, etc.
- Most member organizations do not have staff who would be considered “data experts”. Nevertheless, these organizations get value out of CDP data.
- Our members use CDP data to do two things:
 - Learn new things about their community
 - Communicate facts about their community



Target Group Profiles

- The most popular products among our members are the TGPs
 - Essentially, a census profile for a specific group
 - TGPs available for Francophone, Indigenous identity, immigrants, people with activity limitations, etc.

Comparison of Francophone population and total population, Timmins, 2021

	Total population	Francophones
Children (% of population)	26.6%	23%
Average age	41.1	44.5
Unemployment rate	8.6%	7.9%
Median annual after-tax household income	\$39,200	\$38,800

Target Group Profiles

Many of our members are interested in data on non-permanent residents (temporary foreign workers, international students) ...

Per cent of workers employed in select industries, Northern Ontario, 2021

Industry	Non-permanent residents	Total population
Agriculture, forestry, fishing and hunting	0.7%	2.1%
Mining, quarrying, and oil and gas extraction	1.7%	5.7%
Professional, scientific and technical services	4.7%	4.4%
Retail trade	24.4%	12.4%
Accommodation and food services	26.1%	5.8%

Going a Step Further: Members Doing Calculations With CDP Data

- Some members don't just pull stats from CDP; they do their own calculations using this data
 - Example: using data on employment by occupation for various age groups to identify occupation groups at risk of large-scale retirements
- CDP is the most affordable way for members to get detailed occupation data by age for a small community like Kapuskasing (pop. ~ 7,000)

Replacement demand calculation, Kapuskasing

	25-64 in 2021 "working age"	15-24 in 2021	55-64 in 2021	Working age in 2031	% needing to be replaced
Carpenters	35	0	10	25	29%
Social and community service workers	55	0	15	40	27%
Welders and related machine operators	10	0	0	10	0
Construction millwrights and industrial mechanics	50	20	10	60	- 20%
Early childhood educators and assistants	25	15	0	40	- 60%

NORTHERN
POLICY INSTITUTE

INSTITUT DES POLITIQUES
DU NORD

Giwednong Aakomenjigewin Teg
b ΔC2-4σ-4\ P-7N.δ\ 4D^9-ΔbΓ\
Institu dPolitik di Nor
Aen vawnd nor Lee lway La koonpayeen

THANK YOU. MARSEE. P_aq̇_uᵀdΓNᵀ MERCI.
MIIGWECH.

1 (807) 343-8956 | info@northernpolicy.ca

www.northernpolicy.ca



/NorthernPolicy